



## Judel Vrolijk One tonner ex-Pinta €29,500 VAT included

**Reference ID:** 702

**Displacement (Kg):** 5753

**Builder / Designer:** Judel Vrolijk

**Beam (mtr):** 3.80

**Model:** Pinta 92

**Draft (mtr):** 2.32

**Designer:** Judel and Vrolijk

**Displacement (Kg):** 5753

**Year:** 1992

**Material:** Carbon

### Disclaimer

The Company offers the details of this vessel in good faith but cannot guarantee or warrant the accuracy of this information nor warrant the condition of the vessel. A buyer should instruct his agents, or his surveyors, to investigate such details as the buyer desires validated. This vessel is offered subject to prior sale, price change, or withdrawal without notice.

**Location:** Netherlands

**Engine:** Volvo Penta

---

## **Description**

Owners comments: In general the boat is in very good condition. All carbon. No wet spots or delamination. Many parts are made of titanium.

Features:

- Built by Marten Marine
- Running rigging has been completely renewed in 2022 and 2023.
- All halyards are dyneema or equivalent (Line specialist) and custom made
- All blocks and stoppers where necessary will be renewed in 2023.
- WC: Completely new penetrations and pipes (2023).
- Entire electrical installation has been renewed (2021 - 2023) with protective cables throughout the ship.
- The boat was out of the water in 2023 and the entire underwater hull was rebuilt and provided with antifouling.
- New forestay 2024

### **Inspection for AZAB:**

- Certificate cat 1 Ocean Race design from Judel Vrolijk (Declaration of conformity)
- Certificate for stability requirements (STIX, angle, etc.) from Arthur Peltzer
- Rudder and keel and construction certificate from Triple A yachting (all 25 keel bolts have been sonar measured and are excellent)
- IRC rating (1,045) including testing required for rating

## **General**

### **Keel**

- carbon and lead

## **Rigging**

- Running rigging has been completely renewed in 2022 and 2023.
- All halyards are dyneema or equivalent (Line specialist) and custom made
- Spinnaker pole
- Vang
- Genua furler
- Alu mast and boom
- New forestay 2024

### **Disclaimer**

*The Company offers the details of this vessel in good faith but cannot guarantee or warrant the accuracy of this information nor warrant the condition of the vessel. A buyer should instruct his agents, or his surveyors, to investigate such details as the buyer desires validated. This vessel is offered subject to prior sale, price change, or withdrawal without notice.*

## **Sails**

- 3 Spinnakers
- 1 Laminate mainsail (2014, Wittevrongel) - reasonable condition (4 reef eyes)
- 1 Laminate high aspect jib (2016, Wittevrongel) - in good condition
- 1 140% dacron genoa (2014 Elstrom) - in excellent condition
- 1 Heavy weather jib - in good condition
- Mainsailcover
- lazy bag

## **Accommodations**

### Plumbing

- Double water tank (200 liters) with Jabsco electric pump and separate controls (2020)
- Toilet: Completely new inlets and pipes (2023)
- 2x automatic bilgepump

### Galley

- Double burner gas stove with oven Pacific 4500 (2020)

### Interior

- Toilet Jabsco
- Sleeps 5 on mattresses

## **Deck and Cockpit**

- Tiller with spinlock extension
- Winches: 2x Antal W52 / 2x Lewmar / 2x Lewmar 460
- Double cabin hatch (1x composite, 1x plexiglass)
- Bags in cockpit
- Frederikson and Ronstan deck hardware

## **Electrics**

Entire electrical installation has been renewed (2021 - 2023) with protective cables throughout the ship.

### Disclaimer

*The Company offers the details of this vessel in good faith but cannot guarantee or warrant the accuracy of this information nor warrant the condition of the vessel. A buyer should instruct his agents, or his surveyors, to investigate such details as the buyer desires validated. This vessel is offered subject to prior sale, price change, or withdrawal without notice.*

- Victron solar panel 140 Wp (2023)
- Victron SmartSolar MPPT 75/15 Charge Controller (2023)
- 3x100 Amp hour batteries
- Cytrix battery combiner (2022)
- Victron battery monitor
- Mastervolt battery charger
- Led lights

## **Engine**

Completely overhauled Saildrive and engine cooling (2021) - Volvo Penta 2003T

- New start engine (2022)
- New starter battery (2023)
- 2 blade folding prop

## **Safety**

- 2 Anchors
- Flares
- 2 Electric bilge pumps
- 2 Manual bilge pumps
- 3 Fire extinguishers
- 3 Sling cages

## **Electronics and Navigational Gear**

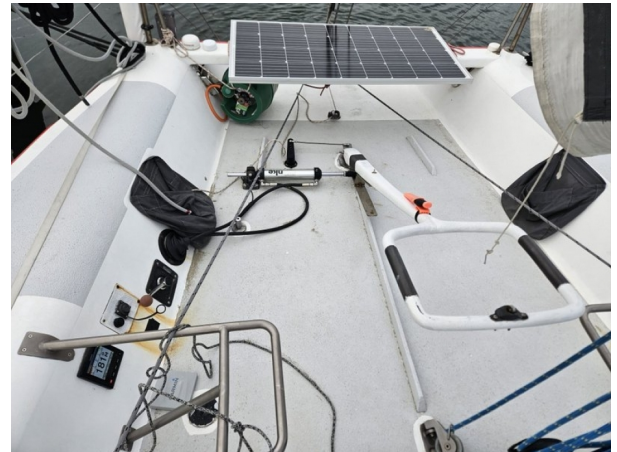
Owner: She sails excellently on hydraulic autopilot from NKE and intelligence from Garmin

- Garmin Reaction 40 CCU compass and autopilot control
- Garmin ECU 10 controller
- Garmin GRF 10 rudder feedback
- Garmin GHC 20 compass screen and autopilot control
- Watcheye antenna splitter and AIS B (2020)
- Autopilot operation at 3 locations: GPS MAP, SHC20, remote control
- Raymarine ST60 wind
- Raymarine ST60 speed, depth, temp (new log 2023)
- Shipmodul MiniPlex - 3WI - N2K (connects basic n2k network to NMEA ST60 and provides WiFi)
- All instruments can be viewed on board via WiFi

### **Disclaimer**

*The Company offers the details of this vessel in good faith but cannot guarantee or warrant the accuracy of this information nor warrant the condition of the vessel. A buyer should instruct his agents, or his surveyors, to investigate such details as the buyer desires validated. This vessel is offered subject to prior sale, price change, or withdrawal without notice.*





#### Disclaimer

The Company offers the details of this vessel in good faith but cannot guarantee or warrant the accuracy of this information nor warrant the condition of the vessel. A buyer should instruct his agents, or his surveyors, to investigate such details as the buyer desires validated. This vessel is offered subject to prior sale, price change, or withdrawal without notice.

## **Viewing Arrangements**

Due to the corona crisis and the varying locations of our yachts, we offer viewings of yachts for sale anywhere in the world from the comfort of your own home. From live walk-throughs using tools such as WhatsApp, Facetime or Zoom you can literally zoom in to every corner and check out every detail of the decklayout, interior configuration, rig and the engine room.

During these guided tours, together with one of our brokers there is the opportunity to ask our brokers all questions you have as when you make a real-life visit.

Together with our specifications, this package will give you a realistic impression of the volume, layout and condition of the yacht and equipment.

After an online guided tour together with the package of information at hand, you can decide if you like to see the yacht, or wish to send a surveyor to check the yacht. We hope to see you soon online or in real life for a visit on the yacht of your dreams.

### **Team Racing-Yachts.com**

T: +31 642444433

E: [contact@racing-yachts.com](mailto:contact@racing-yachts.com)

Opening Hours - 7 Days per Week

**Wish to sell your yacht? We are always looking for boats for our clients.**

**Contact us for more information on the way we work.**

## **Social Media Links**



### **Disclaimer**

*The Company offers the details of this vessel in good faith but cannot guarantee or warrant the accuracy of this information nor warrant the condition of the vessel. A buyer should instruct his agents, or his surveyors, to investigate such details as the buyer desires validated. This vessel is offered subject to prior sale, price change, or withdrawal without notice.*