



## Bashford Howison 36 / **SOLD** Sydney 36

**Reference ID:** 66

**Displacement (Kg):** 8

**Builder / Designer:** Bashford Howison

**Beam (mtr):** 3.43

**Model:** 36

**Draft (mtr):** 2.20

**Designer:** Bashford

**Displacement (Kg):** 8

**Year:** 1997

**Material:** GRP - polyester

**Location:** Netherlands

**Engine:**

### **Description**

#### **Background info Bashford Howison 36**

The Bashford & Howison 36 is designed by the Australian designers G. Howison and I. Murray. After the successful Bashford &

#### **Disclaimer**

*The Company offers the details of this vessel in good faith but cannot guarantee or warrant the accuracy of this information nor warrant the condition of the vessel. A buyer should instruct his agents, or his surveyors, to investigate such details as the buyer desires validated. This vessel is offered subject to prior sale, price change, or withdrawal without notice.*

Howison 41 the team designed this little sister.

A regatta cruiser that perfectly combines comfort and performance, with very low costs and maintenance. The BH 36 was conceived for navigation without compromise to comfort and speed. The yacht is designed to make life on board comfortable at the harbour and when sailing and ideally suited for owners and crews who wish to compete in regattas, amuse themselves and win, without paying a fortune. It is a genuine dual-purpose yacht which combines performance, quality and longevity, satisfying owners, families and racing crews alike. The BH36 offers custom yacht quality at production yacht prices, fulfilling the aspirations of both head and heart."

## **Construction**

The hull is built in sandwich Kevlar and has the latest generation built - in keel and rudder. Hull is new sprayed 2009

Deck design:

The deck is an excellent working platform and the deep cockpit is safe and at the same time comfortable. The cockpit - seats are comfortable during regattas as well as cruising. The deck equipment is only of the best brands. The metal and stainless steel works are of the highest quality.

## **Accommodation**

The interior is made of light modules, which are moulded to the hull together with a special web reinforcement that gives the boat her great rigidity, supporting the loads of the rigging and the keel. The interior is finished with high quality wood, has a practical galley with stainless steel sink and refrigerator.

- Overhauled interior 2009
- 3 cabin layout
- Main saloon has sofas to port and starboard & lockers for crew and packs
- Charttable
- Two double berths in aft cabin
- Comfortable double bed in the owner's cabin
- Complete head with shower, toilet and sink
- Sleeps 8 in 3 cabins + saloon
- 

## **Galley**

- 2 flame stainless steel burner + stove 2004
- refrigerator

## **Tankage**

Water and dieseltank renewed in 2003

## **Navigation and electronics**

- GPS Lyca plotter Geonaf 6
- Compass.
- AIS + VHF with cockpit speakers
- B&G Hydra 2000, 2 displays in cockpit + jumbos in mast.
- GPS Lyca plotter B&G touch
- GPS interfaced with electronics. Raymarine Autopilot 4000
- Wifi

## **Disclaimer**

*The Company offers the details of this vessel in good faith but cannot guarantee or warrant the accuracy of this information nor warrant the condition of the vessel. A buyer should instruct his agents, or his surveyors, to investigate such details as the buyer desires validated. This vessel is offered subject to prior sale, price change, or withdrawal without notice.*

- Radio VHF with cockpit speakers.

## **Rigging**

- New sparcraft Performance mast 2007
- new rod standing rigging 2007
- New carbon spinnaker pole 2009

## **Sails**

- Main North 3dl 2006Main North 3dl Light 2001 (like new)
- Main North Kevlar pennal 2001
- Main North Dacron 1997
- Main North 3 dl 850 2009
- Genua 1 MG North 3dl 850 2011
- Genua 1 M/H North 3dl 2007
- Genua 1 light North 3dl 2007
- Genua 1 light North 3dl (training)
- G2 North pannel Kevlar 2000
- G3 North 3 dl 850 2009
- G3 North pannel 1998
- G3 North Dacron 1997
- Genua 4 North dacron 1997
- Yankee Mylar North 1997
- Triesail 1997
- Spinnakers0.6 S2 North 2009
- 0.5 A1 North 2009
- 1.3 Van de Werf 2007
- 0,75 North 2006
- 0.4 North 2001
- 0.5 North 1997
- 0.6 North 1997
- Code 3 3di

## **Electrics**

- Shorepower with cable

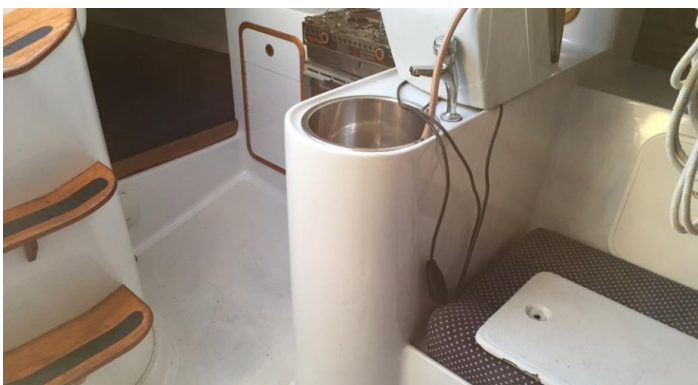
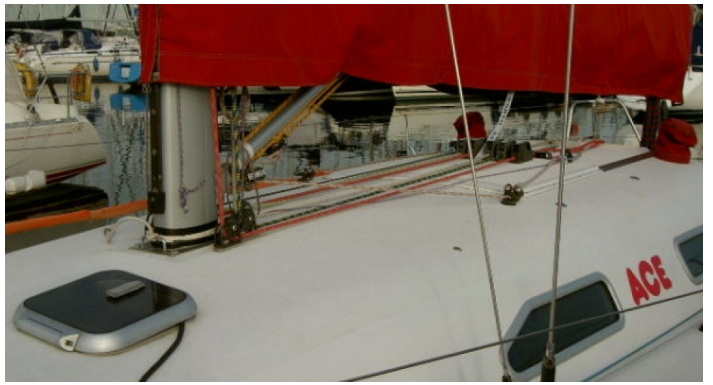
## **Additional**

- Mainsailcover

## **Disclaimer**

*The Company offers the details of this vessel in good faith but cannot guarantee or warrant the accuracy of this information nor warrant the condition of the vessel. A buyer should instruct his agents, or his surveyors, to investigate such details as the buyer desires validated. This vessel is offered subject to prior sale, price change, or withdrawal without notice.*





#### Disclaimer

The Company offers the details of this vessel in good faith but cannot guarantee or warrant the accuracy of this information nor warrant the condition of the vessel. A buyer should instruct his agents, or his surveyors, to investigate such details as the buyer desires validated. This vessel is offered subject to prior sale, price change, or withdrawal without notice.

## Viewing Arrangements

Due to the corona crisis and the varying locations of our yachts, we offer viewings of yachts for sale anywhere in the world from the comfort of your own home. From live walk-throughs using tools such as WhatsApp, Facetime or Zoom you can literally zoom in to every corner and check out every detail of the decklayout, interior configuration, rig and the engine room.

During these guided tours, together with one of our brokers there is the opportunity to ask our brokers all questions you have as when you make a real-life visit.

Together with our specifications, this package will give you a realistic impression of the volume, layout and condition of the yacht and equipment.

After an online guided tour together with the package of information at hand, you can decide if you like to see the yacht, or wish to send a surveyor to check the yacht. We hope to see you soon online or in real life for a visit on the yacht of your dreams.

### **Team Racing-Yachts.com**

T: +31 642444433

E: [contact@racing-yachts.com](mailto:contact@racing-yachts.com)

Opening Hours - 7 Days per Week

**Wish to sell your yacht? We are always looking for boats for our clients.**

**Contact us for more information on the way we work.**

## Social Media Links



### **Disclaimer**

*The Company offers the details of this vessel in good faith but cannot guarantee or warrant the accuracy of this information nor warrant the condition of the vessel. A buyer should instruct his agents, or his surveyors, to investigate such details as the buyer desires validated. This vessel is offered subject to prior sale, price change, or withdrawal without notice.*