



Soto 40

€130,000 VAT excluded

Reference ID: 539

Displacement (Kg):

Builder / Designer: Soto

Beam (mtr): 3.75

Model: 40

Draft (mtr): 2.6

Designer: Soto

Displacement (Kg):

Year: 2011

Material: Composite

Location: Hong Kong

Engine:

Disclaimer

The Company offers the details of this vessel in good faith but cannot guarantee or warrant the accuracy of this information nor warrant the condition of the vessel. A buyer should instruct his agents, or his surveyors, to investigate such details as the buyer desires validated. This vessel is offered subject to prior sale, price change, or withdrawal without notice.

Description

Well maintained SOTO 40

Hull nr 22.

- Year built 2011
- Yacht design Soto/Acebal
- Builder M-Boats
- Hull/deck Glass-Sandwich /carbon reinforcement
- Measurement Certificate: One Design Soto 40

Ready for a new campaign!

Rigging

- KING COMPOSITES Carbon Mast Clear Coat finish
- KING COMPOSITES Aluminum boom Clear Coat finish in black
- KING COMPOSITES- Quick Vang
- Carbon Bowsprit (Spare)
- Carbon Bowsprit (Installed 01/11/2018)
- HARKEN Foil C (Installed 01/05/2016 > New)
- HOLMATRO Jacking system (10/01/2019 Serviced)
- New ROD standing rigging 2019
- Running gear DYNEEMA
- New Technora backStay

Sails

Sails

Training

- LM3 - july-13 -North 3DL 860 - 0-13 TWS - 70% Carbon 30% Aramid - Battens RBS carbon
- A2 - 2011- North white - ESP 022 sailnumber

One design

- M 2015 - april 2015- QuantumFusion #90697 - 17500 dpi - 65 m2 - FRA 22 sailnumber - Carbon (70%)/twaron
- New North 3Di J1 2019 october , used once in China cup
- J1 -april 2015- QuantumFusion #90698- 10000 dpi- 43,88m2 - 0-12 TWS - Carbon (70%)/twaron
- J2 - June 2013 - North 3Di - 19600 dpi- 43m2- 14-18 TWS

Disclaimer

The Company offers the details of this vessel in good faith but cannot guarantee or warrant the accuracy of this information nor warrant the condition of the vessel. A buyer should instruct his agents, or his surveyors, to investigate such details as the buyer desires validated. This vessel is offered subject to prior sale, price change, or withdrawal without notice.

- J3 - April 2014 - North 3Di- 18-25 TWS
- A1.5 - April 2014 - North Superkote 60- 178,6m2- FRA 22 sailnumber- 0-13 TWS
- A2 - sept-13 - North Superkote 75Rose/Pink - 183m2- FRA 22 sailnumber - TWS 8-18
- A4 - April 2014 - North Superkote 60Rose/Pink - 182,3m2- FRA 22 sailnumber - 18-25 TWS
- A1.5 NS HKG2518 North Superkote 0-12 TWS Black OCT 2018
- A2 NS HKG2518 North Superkoye 8-18 TWS White. Oct 2018

IRC Training sails

- M IRC- May 2013- North 3DL 860- 19600 dpi- FRA 22- 1 reef - 2 Type of battens
- LM2 - 2014- North 3Di
- J2- 2011- North 3Di
- J3- 2011- North 3DL
- J4- June 2013- North Spectra 195 TX- 30,5m2
- TMT
- A1.25- 2011 - North white 0,5 - ESP 022 sailnumber - 0-6 TWS
- A2- 2012- North white- ESP 022+ insalus- 10-18 kts TWS
- A4 T- Occasion- North white
- A5- June 2013- North Superkote 130- 135m2- HKG2518
- Code 0- May 2013- North CZ60 (75%)- HKG2518

Delivery sails

- Main- 2011- North Dacron
- Jib- 2011- North Dacron
- Boomcover

Accommodations

- Berth with canvas slings - 2
- Canvas anti Rolling / protection for Batteries & electronics 2x

Deck and Cockpit

New Deck gear Harken installed on 01/09/2018

- 2x 50.3STP (primaries), 3 Speed, HARKEN
- 2x 40.2 STP (halyard) 2 Speed HARKEN
- 2x 46.2 STP (mainsheet), 2 Speed HARKEN
- 2x 46 performa 46.2STP(Runner), 2 speed

Disclaimer

The Company offers the details of this vessel in good faith but cannot guarantee or warrant the accuracy of this information nor warrant the condition of the vessel. A buyer should instruct his agents, or his surveyors, to investigate such details as the buyer desires validated. This vessel is offered subject to prior sale, price change, or withdrawal without notice.

- 5x Spinlock (XX0812) jib & asym halyard
- 4 Lewmar Size 22 flush circular fore hatch
- 01/09/2018 new HARKEN blocks

Electrics

- 120A 12V Service battery, Installed 01/04/2013
- Plug Computer / B&G, Installed 01/04/2014
- Interior LED lights
- LED Navigation lights

Engine

- Volvo Penta D1-30F Serial # 5102124303T - 23/9/2016 : 1614,3 h. July 2015 serviced July 2015, serviced Mar 2018
- Electronic engine instrument panel
- 50L Alu fuel tank
- 2 blade Gori folding propeller, Installed 22/06/2015

Safety

- Liferaft 10 persons - service date not known
- Life line Cockpit- 2
- Life line on the Deck 4
- Safety equipment for ISAF Category 4 including 10 Life Jackets Sigma manual 150N ISO

Electronics and Navigational Gear

B&G- electronics

- H 3000 Hercules Instrument System
- H3000 20X20HV Display - Mast Top
- H3000 20X20HV Display - Mast Middle 01/10/2014SAV
- H3000 20X20HV Display - Mast Down
- H3000 GFD Display - Mast 01/07/2015SAV
- H3000 FFD Display
- H3000 GFD Display 09/10/2013SAV
- H 3000 Speed Sensor Plastic Flush, Installed 01/07/2015
- H 3000 Depth Sensor Plastic Flush (Spare)

Disclaimer

The Company offers the details of this vessel in good faith but cannot guarantee or warrant the accuracy of this information nor warrant the condition of the vessel. A buyer should instruct his agents, or his surveyors, to investigate such details as the buyer desires validated. This vessel is offered subject to prior sale, price change, or withdrawal without notice.

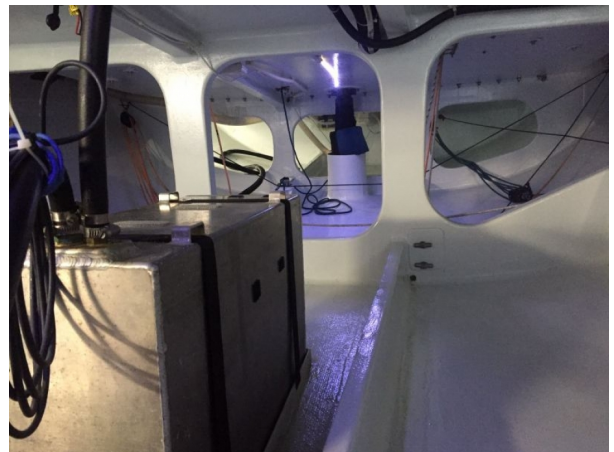
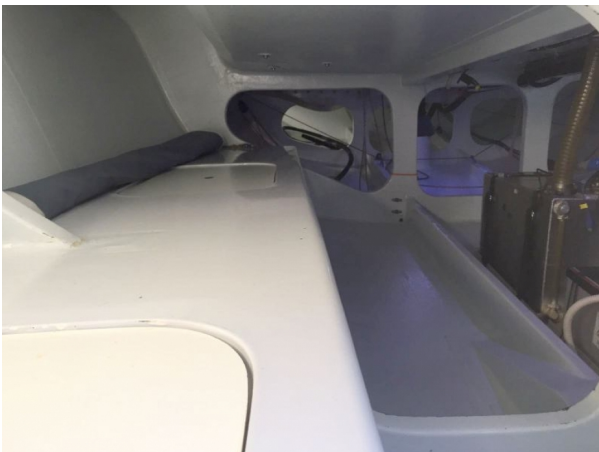
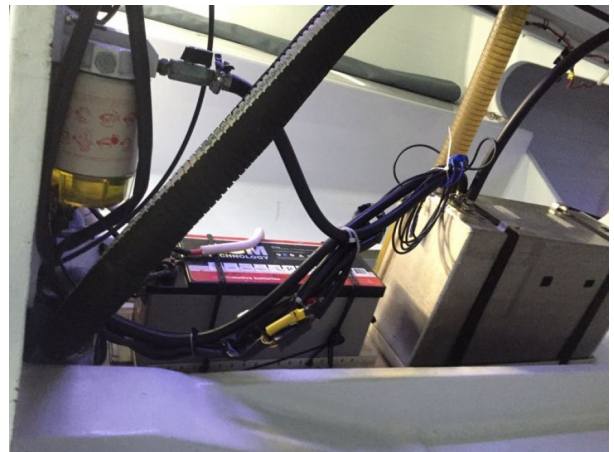
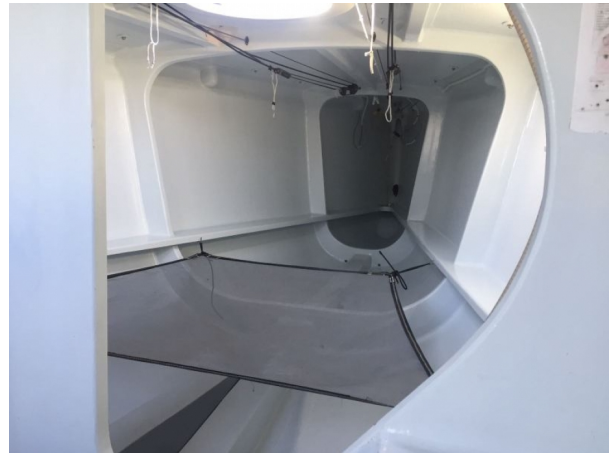
- VMHU Pack 1050 mm
- Compass - Halycon 2000 Installed 04/06/2014
- Load cell Amplifier , Digital - 01/04/2015 Calibration
- Load Pin 16 mm (5/8")
- GPS Garmin MAP 78
- Autopilot SIMRAD TP32, Installed 15/07/2016
- 01/09/2018 new VHF Fixe + Antenne Balcon Arriere centralVHF Fixe + Antenna on the pushpit
- 01/09/2018 new AIS

Additional

- Bushing 60 for keel bolts
- Cradle Repainted 02/2015
- Hull preparation Speedycarbonium antifouling, 01/06/2016

Disclaimer

The Company offers the details of this vessel in good faith but cannot guarantee or warrant the accuracy of this information nor warrant the condition of the vessel. A buyer should instruct his agents, or his surveyors, to investigate such details as the buyer desires validated. This vessel is offered subject to prior sale, price change, or withdrawal without notice.



Disclaimer

The Company offers the details of this vessel in good faith but cannot guarantee or warrant the accuracy of this information nor warrant the condition of the vessel. A buyer should instruct his agents, or his surveyors, to investigate such details as the buyer desires validated. This vessel is offered subject to prior sale, price change, or withdrawal without notice.

Viewing Arrangements

Due to the corona crisis and the varying locations of our yachts, we offer viewings of yachts for sale anywhere in the world from the comfort of your own home. From live walk-throughs using tools such as WhatsApp, Facetime or Zoom you can literally zoom in to every corner and check out every detail of the decklayout, interior configuration, rig and the engine room.

During these guided tours, together with one of our brokers there is the opportunity to ask our brokers all questions you have as when you make a real-life visit.

Together with our specifications, this package will give you a realistic impression of the volume, layout and condition of the yacht and equipment.

After an online guided tour together with the package of information at hand, you can decide if you like to see the yacht, or wish to send a surveyor to check the yacht. We hope to see you soon online or in real life for a visit on the yacht of your dreams.

Team Racing-Yachts.com

T: +31 642444433

E: contact@racing-yachts.com

Opening Hours - 7 Days per Week

Wish to sell your yacht? We are always looking for boats for our clients.

Contact us for more information on the way we work.

Social Media Links



Disclaimer

The Company offers the details of this vessel in good faith but cannot guarantee or warrant the accuracy of this information nor warrant the condition of the vessel. A buyer should instruct his agents, or his surveyors, to investigate such details as the buyer desires validated. This vessel is offered subject to prior sale, price change, or withdrawal without notice.