



**J/11S**

**SOLD**

**Reference ID:** 328

**Displacement (Kg):** 4200

**Builder / Designer:** J Boats

**Beam (mtr):** 3.31

**Model:** J/11S

**Draft (mtr):** 2.20

**Designer:** Johnstone

**Displacement (Kg):** 4200

**Year:** 2016

**Material:** Composite

**Location:** Netherlands

**Engine:** Volvo D1-20F

**Disclaimer**

*The Company offers the details of this vessel in good faith but cannot guarantee or warrant the accuracy of this information nor warrant the condition of the vessel. A buyer should instruct his agents, or his surveyors, to investigate such details as the buyer desires validated. This vessel is offered subject to prior sale, price change, or withdrawal without notice.*

## **Description**

**Owners comment: She is in very good condition. The J/11s is the shorthanded version of the J/111.**

She is to be inspected in Lelystad, the Netherlands.

### **She features>**

- Epoxyprimer and antifouling 2020
- Single carbon rudder modified under supervision of J-Boats (resulting in more control upwind and off the wind)
- 1 metre shorter mast compared to J/111
- Cockpit layout adapted for solo or short-handed sailing
- Tillersteering instead of steeringwheel
- Volvo Penta yearly maintained

### **General**

CE certification A

Built at J Composites France

Sailnumber NED486

IRC rating 2017: 1.049

## **YACHTING WORLD TEST J/11S**

## **Rigging**

- Aluminium fractional rig. The mast is tapered and clear anodized finished. Two pairs of aft swept spreaders.
- Aluminium boom, clear anodized finish, with internal 8:1 clew outhaul system plus 2 reef pennants of which 1 is led back to aft end of the coach roof.
- Discontinuous dyform rigging, rod forestay and textile backstay
- Carbon spi pole
- Rigid vang with 18:1 integral purchase
- Harken furlex new
- Custom Code 0 Sprit with custom stowage/roller incorporated
- All lines/ halyards professional Dynema

## **Sails**

### **Mainsails**

- X Voiles black carbon mainsail Px Black tri radial assembly 35 -medium
- X Voiles black carbon mainsail PX Black tri radial assembly- For offshore racing -heavy

### **Disclaimer**

*The Company offers the details of this vessel in good faith but cannot guarantee or warrant the accuracy of this information nor warrant the condition of the vessel. A buyer should instruct his agents, or his surveyors, to investigate such details as the buyer desires validated. This vessel is offered subject to prior sale, price change, or withdrawal without notice.*

## Jibs

- X Voiles Jib 1 Black carbon Genoa Px Black tri radial assembly 30.5m<sup>2</sup>
- X Voiles Jib 2 Black carbon Genoa Px Black tri radial assembly 30.5m<sup>2</sup>
- X Voiles Jib 3 Black Carbon Genoa The heavy medium jib is made of Kevlar tri radial assembly 29m<sup>2</sup>
- x Voiles Jib 4 2016
- Furling Mylar heavy weather jib with vertical battens - taffeta
- Carbon Jib Top X Voiles 2016
- 2 x Jib 2 (OneSails 4T forte (grey+black) 2018
- 1 x Jib 1 (OneSails 4T forte) 2018

## Spinnakers

- S2 - Light symmetric spinnaker 104m<sup>2</sup> in Blue X Voiles
- S4 - Medium symmetric Spinnaker 85m<sup>2</sup>, in Blue X Voiles
- A5 gennaker

## Accommodations

- Bulkheads and furniture covered in white formica, white gelcoat finished GRP mouldings, for a clean low maintenance finish
- Timber effect laminate finished cabin sole boards
- Saloon hull linings in white "plank" effect GRP moulding, painted finish in fore cabin and quarter berths
- FORE CABIN with Large double berth. Natural light and ventilation from overhead hatch
- Moulded toilet wash module in front cabin, comprising : To port, plinth for toilet with seawater flushed marine toilet, wash basin with drain and pressurized fresh water supply, storage cupboard and locker, To Starboard, large hanging locker
- Access door to saloon
- SALOON is spacious, with natural light from 2 fixed and 2 opening portlights; Main table with drop leaves; Settee berths to port and starboard with cushions & backrests; Flexible bow water tank 100L under berth - currently removed; Lockers behind backrests
- To starboard aft, chart table with lifting lid, storage cupboard and lockers
- 2 stainless steel hand rails on starboard and port headlining
- AFT AREA: Hanging lockers to port and starboard; Double quarter berth to port with cushion and reading light; sail locker to starboard
- Removable companionway ladder for easy access to engine box
- Companionway entrance has plexi washboard with integral vent
- Grey alcantara upholstery
- Covers (original) for kitchen, nav-station and table
- Sleeps 10
- 3kW Webasto heater

## Galley

To port aft, "L" shape galley

- Refrigerator with watercooling pump
- 2-burner gaz stove with oven (never used)

## Disclaimer

*The Company offers the details of this vessel in good faith but cannot guarantee or warrant the accuracy of this information nor warrant the condition of the vessel. A buyer should instruct his agents, or his surveyors, to investigate such details as the buyer desires validated. This vessel is offered subject to prior sale, price change, or withdrawal without notice.*

- sink with drain
- pressurized hot and cold fresh water
- storage cupboard and lockers

## **Deck and Cockpit**

- Deck fitted hardware only to lead back cunningham, outhaul and vang to the cockpit
- Moulded non skid surfaces on the horizontal deck areas
- Moulded toerails on the foredeck
- Twin, High-aspect, balanced spade rudder constructed from biaxial and unidirectional glass, stainless steel stock mounted in JP3 self-aligning bearings
- Cockpit layout adapted for solo or short-handed sailing
- 4 Additional opening ports in aft face of coachroof and cockpit
- Stainless steel chainplates for forestay, backstay, cap and lower shrouds
- Stainless steel mooring cleats (4)
- Self draining foredeck anchor well, with drain for bowsprit tube
- Opening hatch (500 x 500) to the fore cabin; Opening hatch in cockpit to access steering system
- 2 x Jib tracks with ball-bearing cars and 8:1 adjustment purchase system
- 2 x stainless steel handrails on coachroof top
- Aluminium, anodised deck ring, with 7 pulleys to lead halyards and reef lines aft
- 2 x four sheaves and 2 X three sheaves deck organisers to lead halyards aft
- 4 x rope clutches each side of companionway, for halyards and control lines
- 2 camcleats on aft of coachroof for outhaul and cunningham
- 2 swivel mounted camcleats for vang
- 2 x #40 self tailing halyard winches, 2 speed mounted on aft end of coachroof
- 2 clamcleats and 8:1 purchase system for inhauling jib sheets
- 2 x winch handle storage pockets
- Bullseye fairleads and cleat for furling line (on port coachroof side)
- Bullseye fairleads and rope clutch for spinnaker tack line (onstarboard coachroof side)
- Harken mainsheet track mounted on cockpit floor with 4:1 traveller control
- 6:1 mainsheet sytem with swivel base mounted on turret, 4:1 fine tune purchase system, giving a final purchase of 24:1.
- 2 x #46 self tailing primary winches, 2 speed, mounted on cockpit coamings
- Large self-draining cockpit, with sail locker each sides, self draining gas bottle locker.
- 2 low profile custom alloy fairleads to lead jib sheets to the winches
- 2 stainless steel pushpits joined by triple lifelines across transom. LED stern light
- 4 x padeyes with pulleys for Spinnaker sheets
- 2 x Stern mooring cleats
- Sliding companionway hatch with garage
- Plexi companionway washboard with integral vent and lock
- 2 opening windows over galley and chart table (Port and Starboard)
- 2 large fixed windows for main saloon (Port and Starboard)
- Shower in cockpit
- GRP tiller with extra-long tiller extension
- Preparation for elec anchor winch incl remote control

### **Disclaimer**

*The Company offers the details of this vessel in good faith but cannot guarantee or warrant the accuracy of this information nor warrant the condition of the vessel. A buyer should instruct his agents, or his surveyors, to investigate such details as the buyer desires validated. This vessel is offered subject to prior sale, price change, or withdrawal without notice.*

## **Electrics**

- 115 AH alternator
- Master battery switches
- Master switch panel at chart table
- 4 x swiveling spot lights in saloon
- Led Navigation lights
- Chainplates earth grounded to keel for protection from lightning
- Portable Solar panel + controller
- Mastervolt charger/inverter 800w
- 12 volt socket in cockpit for portable Solar Panel /to be used for flash light too
- 220v socket off inverter and 12v socket off shore power mounted at chart table
- Nasa battery monitor volt w/dual function control box
- Battery isolator emergency link switch
- 1 x Mastervolt 800VA inverter (12V to 230V)
- 1 x mastervolt battery charger
- 1 x start-battery
- 1 x solar battery charger (removable)
- 1 x AGM100A accessory battery (2020)
- 20 litre boiler (230V)
- all LED lights in and out

## **Safety**

### **Safety equipment**

- Horseshoe set with light drogue and pocket
- Bucket x 2
- Softwood Plugs
- 2kg Dry Powder Extinguisher
- First Aid Kit
- Second manual bilge pump
- Pair of jackstays
- 2 x Additional padeyes for clipping on
- Emergency tiller
- 3 x bilge pump (1 elec, 2 manual)

## **Electronics and Navigational Gear**

- 2 x B&G Zeus Z2 7inch plotter
- 5 x B&G Triton T41 display

### **Disclaimer**

*The Company offers the details of this vessel in good faith but cannot guarantee or warrant the accuracy of this information nor warrant the condition of the vessel. A buyer should instruct his agents, or his surveyors, to investigate such details as the buyer desires validated. This vessel is offered subject to prior sale, price change, or withdrawal without notice.*

- 2 x B&G Autopilot control
- 1 x AC42 autopilot computer
- 1 x Jefa drive
- 1 x B&G VHF
- 1 x Fusion radio with bluetooth (speakers inside and outside)
- 1 x AIS Transponder

## **Additional**

### **Covers**

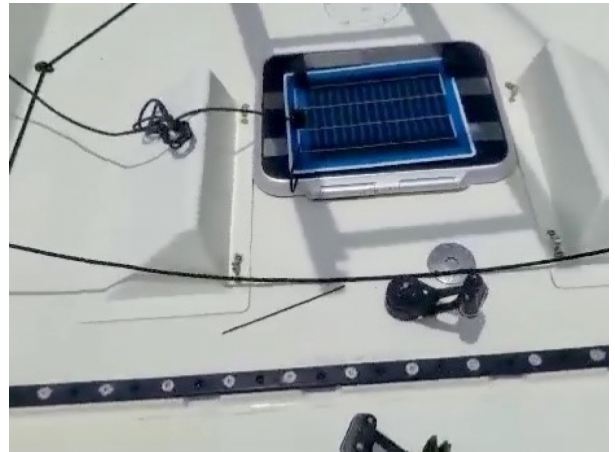
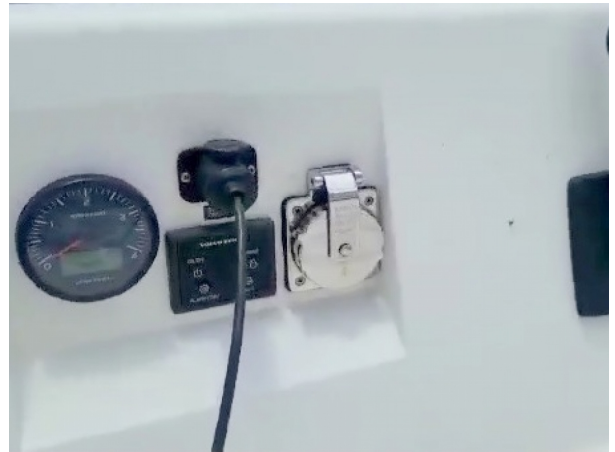
- Chart table padded cover
- Galley padded cover
- Saloon table padded cover
- Lee cloths
- Mainsail sailcover

### **Extra's**

- Waterbag 50litre 2020
- 3 winch handles
- 1 x 15Kg Anchor (delta) chain and rope
- Port quarter berth bunk cushion
- Padded guard wire covers
- 10KG Delta anchor to suit bow roller 15M 8mm chain and 50m 12mm warp for windlass
- 8mm anchor twist shackle
- 4 padeyes for outboard leads
- Custom s/s work for two weed deflectors,
- Gas bottle holder
- Pop-up Mooring Cleats at bow
- Extra water tank in bow, filler and breather in sink area with change over valve at fwd end of port bunk
- Cockpit shower
- Hot water calorifier-disconnected
- Endorsed IRC rating application
- Cover for double diode in stbd seat back locker
- Non slip tape on hatches
- bow lacings
- Vetus water strainer
- Fuel water seperator
- Additional Harken jammers positioned on coaming by the primary winches, so that kite sheets etc can be jammed off.
- Jammers on the mast for jamming off the spinnakers when hoisting

### **Disclaimer**

*The Company offers the details of this vessel in good faith but cannot guarantee or warrant the accuracy of this information nor warrant the condition of the vessel. A buyer should instruct his agents, or his surveyors, to investigate such details as the buyer desires validated. This vessel is offered subject to prior sale, price change, or withdrawal without notice.*



**Disclaimer**

The Company offers the details of this vessel in good faith but cannot guarantee or warrant the accuracy of this information nor warrant the condition of the vessel. A buyer should instruct his agents, or his surveyors, to investigate such details as the buyer desires validated. This vessel is offered subject to prior sale, price change, or withdrawal without notice.

## Viewing Arrangements

Due to the corona crisis and the varying locations of our yachts, we offer viewings of yachts for sale anywhere in the world from the comfort of your own home. From live walk-throughs using tools such as WhatsApp, Facetime or Zoom you can literally zoom in to every corner and check out every detail of the decklayout, interior configuration, rig and the engine room.

During these guided tours, together with one of our brokers there is the opportunity to ask our brokers all questions you have as when you make a real-life visit.

Together with our specifications, this package will give you a realistic impression of the volume, layout and condition of the yacht and equipment.

After an online guided tour together with the package of information at hand, you can decide if you like to see the yacht, or wish to send a surveyor to check the yacht. We hope to see you soon online or in real life for a visit on the yacht of your dreams.

### **Team Racing-Yachts.com**

T: +31 642444433

E: [contact@racing-yachts.com](mailto:contact@racing-yachts.com)

Opening Hours - 7 Days per Week

**Wish to sell your yacht? We are always looking for boats for our clients.**

**Contact us for more information on the way we work.**

## Social Media Links



### **Disclaimer**

*The Company offers the details of this vessel in good faith but cannot guarantee or warrant the accuracy of this information nor warrant the condition of the vessel. A buyer should instruct his agents, or his surveyors, to investigate such details as the buyer desires validated. This vessel is offered subject to prior sale, price change, or withdrawal without notice.*